



CAMBRIDGE
MIDDLE
SCHOOL

CONNECT · INSPIRE · GROW



YEAR 7-10
2025
PROSPECTUS



Contents

Welcome from Principal	2
Vision, Values and Strategic Goals	3
Learning at CMS	4
Enrolment Zone and Procedure	5
Student Costs/Donations	6
School Hours, Contact Details and Absentees	6
Positive HERO for Learning	7
Uniform	7
Pastoral Support Services	7
Opportunities and Sports at CMS	8
Website Links	9

Important Dates

School Terms

Term One	Mon 03 February to Fri 11 April
Term Two	Mon 28 April to Fri 27 June
Term Three	Mon 14 July to Fri 19 September
Term Four	Mon 06 October to Fri 12 December

Public Holidays

Waitangi Day	Thursday 6 February
Easter	Friday 18 April
	Monday 21 April
	Tuesday 22 April
Anzac Day	Friday 25 April
King's Birthday	Monday 2 June
Teacher Only Days	Friday 13 June
	Additional days to be confirmed
Matariki	Friday 20 June
Labour Day	Monday 27 October

Welcome to Cambridge Middle School

Mihi kia koutou katoa; nau mai haere mai.



Welcome to Cambridge Middle School (CMS). We are aware that the transition to middle school can be significant and we put a lot of effort into working with you and your child's contributing school to try to ensure this is as smooth for your child as possible. We are excited to have you as part of our CMS community and we look forward to working in partnership with you and your children.

Our Vision

The vision for our school is Connect, Inspire, Grow. If we are living our HERO values then we will be connecting with all of our community, students and staff in meaningful ways, and in turn our community will feel connected to the school and be positive contributors. We will have created environments, relationships and a curriculum that inspires people to be here and to want to improve. As a result, if we have created the conditions where people feel strongly connected and are inspired by the place they are in, then they will make a choice to put in effort to grow in many areas of their life. For us to enact this vision and our values, we need to keep a continued focus on embedding these as our CMS way of being and making deliberate and strategic links to all aspects of school life.

Middle Schooling

In the New Zealand Curriculum 'Learning in Years 7-10' is listed as its own learning pathway. Research indicates that these years are second only in developmental learning to the first three years of life. Research also suggests that the middle years of learning is the time when young people begin to make choices as individuals that will impact significantly on their lives. This is why we have a strong philosophy of providing a diverse range of opportunities for children to explore.

Our dedicated educators at Cambridge Middle School have a passion for teaching and learning in the middle years and are committed to ongoing professional

development. Our teachers develop strong relationships with their learners and are advocates for their needs. Cambridge Middle School prides itself on having a strong pedagogy to support middle years students. Our staff are committed to being informed, inclusive and innovative around the way we educate and care for our students. We have high expectations of student achievement in all facets of school life, and believe all learners need to be supported to develop skills and find their passion to become life-long learners. Promoting this in a positive and caring environment will ensure all students are prepared as effectively as possible, to become confident and connected citizens, who contribute positively to the Cambridge community.

What is important to us as a middle school?

At Cambridge Middle School we believe the emerging adolescent is a very special and unique age group to teach. It takes a balance of teaching knowledge, relationship building, caring and humour to be successful with middle school children. Children of this age are developing self-identity, opinions and an understanding of the world around them, and it takes people with a specific skill set and understanding to nurture them. We support this development through explicitly teaching and living our school HERO values of Happiness, Excellence, Relationships and Opportunities. We have a strong passion and commitment to developing programmes that support the academic, sporting, social/emotional and cultural development of our students. Our responsibility is to ensure that your child continues to receive a high-quality education within a safe, respectful and supportive environment.

**Naku noa,
Daryl Gibbs**

Vision



**CAMBRIDGE
MIDDLE
SCHOOL**

CONNECT · INSPIRE · GROW



Values

h	e	r	o
HAPPINESS HĀKOAKOA	EXCELLENCE PANEKIRETANGA	RELATIONSHIPS WHANAUNGATANGA	OPPORTUNITY WHEAKO
We provide an environment where everyone's identity is nurtured and they are cared for and safe.	We encourage the pursuit of our personal best in environments that are engaging and innovative.	We create a sense of belonging through valuing diversity, kindness and respect.	We offer a variety of meaningful and enriching experiences to enhance our lives.
"Mauria te pono" Believe in yourself, to be authentic, to be honest	"Whala te iti kahurangi" Strive for excellence	"Aroha atu, aroha mai" If kindness is sown then kindness you shall receive	"Tūwhitia te hopo" Feel the fear and do it anyway



Strategic Goals

AKO DEVELOPING CAPABILITY

We have a highly competent and committed team

MARAUTANGA CURRICULUM

We have a curriculum that is relevant, engaging and challenging

WHANAUNGATANGA COMMUNITY

We have strong partnerships between home and school and with our wider community

TE AO MĀORI

Our culture and community are committed to the development of te reo me ōna tikanga Māori



www.cms.school.nz



Learning at CMS

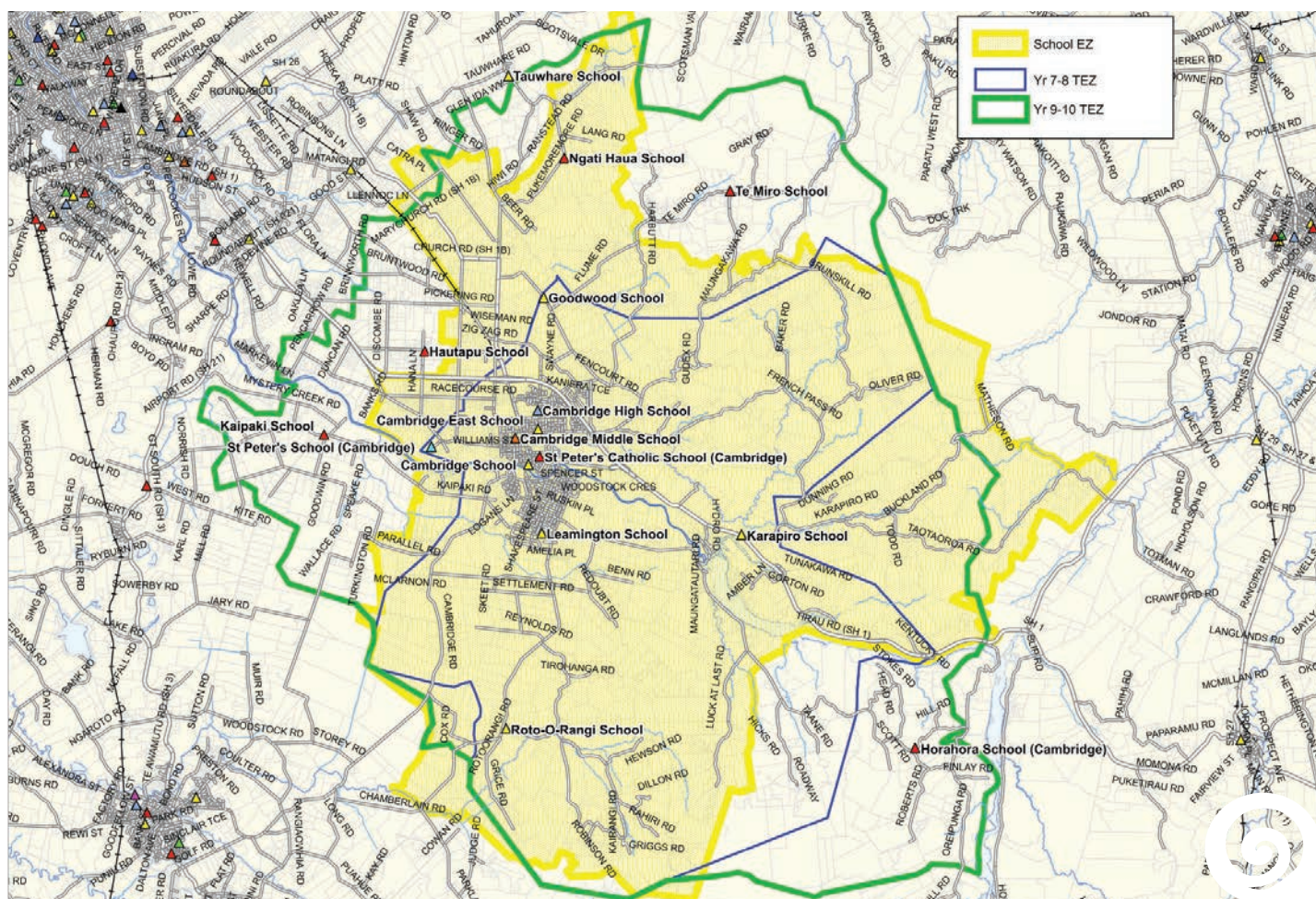
At Cambridge Middle School we believe that young adolescents learn best when they are engaged and motivated. Our school embraces a conceptual curriculum and an inquiry learning cycle that aim to spark curiosity and interest in the world around them. Our curriculum allows students to deepen their understanding of curriculum areas by applying their knowledge and skills through a school-wide concept. Through our curriculum we look for opportunities to localise learning and tell important local stories that will connect our students to their whānau, peers and their place in our world. We aim to **connect** our students to their learning and their community, **inspire** them to engage in deep learning, and support them to **grow** into well-rounded, thriving global citizens.

Our conceptual approach, combined with strong structured Mathematics and Literacy programmes, support our students to become skilled learners across the curriculum.

We encourage the development of resilience and a growth mindset. Risk takers require a comprehensive safety net and our PB4L approach to student welfare and our value of **Happiness**, where identity is valued and students feel cared for and safe, provides this. Our value of **Opportunity** challenges all students to look out for experiences that will allow them to find out more about their potential and we encourage students to show initiative. You and your child are encouraged to be actively involved on a four year journey that has the ability to make a significant difference in their life.

The majority of learning areas will be taught in a student's homeroom setting. Through our value of **Excellence** we encourage students to pursue their personal best. Throughout the year students will also have the opportunity to rotate through six specialist teaching areas: Design Thinking, Visual Art, Food Technology, Drama, Music and Science.

Our value of **Relationships** nurtures the bicultural and multicultural nature of New Zealand society by valuing diversity and celebrating the uniqueness of each student. We provide opportunities for students to build their knowledge of te reo me ōna tikanga Māori throughout their time here. All students have the opportunity to participate in our Kapa Haka rōpu where they will learn traditional and modern waiata, poi, actions, and our school haka. We value connections with all students' whānau and actively encourage them to be involved in the school community and with their child's learning. Whānau Hui are held during the year to further strengthen the bond between home and school to ensure that we hear the voices of our community.



Enrolment Zone

Our school enrolment zone came into effect effective from 01 January 2021. To view the confirmed zoning area for Cambridge Middle School (EZ = Enrolment Zone, TEZ = Transport Entitlement Zone) go to www.cms.school.nz/cms-enrolment-and-zone/. The confirmed boundary now brings the zone down to the Pukemoremore Road/Victoria Road intersection, travels east along Pukemoremore Road (includes Lang Road) to the intersection with Scotsman Valley Road, turns right into Scotsman Valley Road – the zone ends at number 491 Scotsman Valley Road (includes Scotsvale Drive).

You will find the link for online enrolments under Enrolment Procedures below. If families appear to be out of zone, they are welcome to call us; we do advise those families to submit an online enrolment form (or send a completed hard copy form to us) by the due date of 21 August 2024. We will then contact out of zone families with information about our set capacity and ballot numbers and procedures.

Enrolment Procedure

To access our online enrolment form go to www.cms.school.nz/enrolments-and-zone

Year 6 Open Day
Friday 9 August 2024
for Parents

Two sessions:
9.00am – 10.00am
1.45pm – 2.45pm

Year 6 Orientation Days
Wednesday 4 September 2024
Thursday 5 September 2024

for Students only
9.30am – 11.00am both days

Meet the Teacher
Late January 2025
for Parents and Students
Further information to be
advised by email.



Student Costs/Donations

School Donations Year 7 and 8 Only

\$150.00 per student per year

These donations are an essential part of the school's operations budget. This will help the school provide additional opportunities and resources.

Other Possible Programme Costs

Costs that could occur periodically for some students during the year (approx. costs only)

Outdoor Education \$250.00 - \$350.00
Sports Trips \$300.00 - \$450.00

Technology/Art Enrichment Group up to \$70.00

Credit

The School Board does not extend credit. You are able to set up a direct debit payment at the school office. We also have Eftpos available. There is also an option to pay through the caregiver portal, refer to www.cms.school.nz/parent-portal/

School Hours

8.00am.....Office is manned
8.45amPrepare for learning
8.50amBell for classes to commence
10.10 - 10.30am.....Break 1
11.50 - 12.00pmBreak 2
1.10 - 1.55pm.....Lunch time
3.00pmSchool finishes
3.10pm.....Students to clear grounds/buildings,

Except for:

- Sports/Music practice
- When students have been home and returned with parental permission
- When prior arrangements have been made

School Contact Details

Office07 827 5135
Emailoffice@cms.school.nz
Website.....www.cms.school.nz
Facebook.....Cambridge-Middle-School

Absentees

Mobile.....021 0250 3796
Emailattendance@cms.school.nz

Positive HERO for Learning

At Cambridge Middle School, we follow the Positive Behaviour for Learning (PB4L) Restorative Practice approach. We have renamed it PH4L as our Positive Behaviour for Learning (PB4L) approach is centered around our core HERO values: Happiness, Excellence, Relationships, and Opportunity.

This model emphasizes building and maintaining positive, respectful relationships throughout our kura and community. Our kaiako and staff are trained in the best practices to help maintain and restore relationships when needed.

By fostering these positive and respectful relationships between staff, students, and our whānau community, we can better address any issues that may arise. Whether it's changes in a tamariki's behaviour or progress, we believe in working closely with you, our valued whānau and caregivers, to ensure the best support for our learners.

We recognise the importance of this partnership and we will be in touch with you if we have any concerns about your tamariki. Together, we can make decisions about the best way to support your child's success.

Uniform

As we are a uniform school it is expected that the school uniform will be worn at all times. Please refer to the link on our website for uniform expectations.

www.cms.school.nz/parents--uniform



Pastoral Support Services

Pouarataki - School Counsellor

Available for students to talk to, working therapeutically through challenging and difficult times. Our wellbeing space, Mana Manaaki has been developed to create useful workshops that support a wellbeing culture enabling students to learn skills and acquire tools that can enrich their lives. As there is no funding below high school for school counsellors in schools this is a fantastic step towards increasing the ways in which we support our students

Counselling

www.cambridgelifeskills.co.nz

Cambridge Middle School offers an external counselling service using counsellors paid by Cambridge Lifeskills. Counsellors are available most days of the week.

24-7 Youth Workers

We are fortunate to have a connection with Raleigh Street Christian Centre who provide us with two Youth Workers. They are an essential part of our school's pastoral team. During the week they will be out in the playground at break times running lunchtime activities, joining in with sport or simply hanging out with students. Every Monday, Wednesday and Friday morning tea they help with our Kickstart Breakfast Club serving milk, Weet-Bix and Milo (in the colder months). The remaining hours are in class time where they are helping out with school-led activities, one-on-one mentoring, helping with school trips, etc.

Opportunities at CMS

As a core value at CMS is Opportunities, we pride ourselves on being able to offer a wide variety of opportunities for our students to learn and grow.

Academic

- Science Fair
- Waimaths
- Bay Maths
- Otago Maths
- Literacy Quiz
- Maths
- Literacy
- Science
- Technology
- Kiwi Competitions (University of Canterbury)

The Arts

- Dance
- Drama
- Art
- Choir
- Kapa Haka
- Music Lessons
- Production
- Drum Line
- Rock Bands
- School Band

Service to School

- Student Leader
- Librarian
- Office Duty
- Sports Leader
- Road Patrol

School Sports Competitions

- Swimming Sports
- Cross Country
- Totara Springs
- Athletics
- WIMSS
- AIMS Games

We also offer a number of sporting opportunities outside of school.



Sports at CMS

Cambridge Middle School students have the opportunity to play a wide and varied range of sports all year round. We are very fortunate in this regard and really appreciate the efforts of the staff and volunteers who help organise and support sports in our region.

School Based Sports:

Our courts have been laid with Tiger Turf providing us with an all-weather court. During the school day we offer the following:

- Physical Education Programme
- Activities at lunch intervals e.g. inter-class competitions, practice sessions, fun games
- Competition - Athletics, Cross Country and Swimming

Local Leagues & Competitions:

Teams are entered in the following union/association competitions: Basketball, Cricket, Football, Hockey, Lacrosse, Netball, Rugby, Softball, Touch and Water Polo. Some of these codes are catered for via clubs. We support these groups by promoting, advertising and referring interested students. Outside the pursuits already mentioned the sports group also promotes: Golf, Squash, Cycling, Multi Sports, MotoX, Sailing and Equestrian.

Regional WIMSS Sports:

During the year we are given the opportunity to enter the competitive arena via the following sports: Athletics, Badminton, Basketball, Cricket, Cross Country, Football, Hockey, Lacrosse, Netball, Rugby, Swimming, Tennis, Touch, Triathlon and Volleyball. Teams/individuals are chosen on merit, along with a high standard of sportsmanship, correct sports uniform and citizenship.

AIMS Games:

This is a great opportunity for competitive sports people to participate against the country's greatest. Held in Tauranga/Mount Maunganui during September, it is the biggest multi-sport event for 11, 12 and 13 year olds in the Southern Hemisphere with over 10,000 athletes attending.

Check out our school website to access further information about opportunities and the various sports and sporting events offered at Cambridge Middle School www.cms.school.nz/cms-sport

Website and Online Links

Here are some handy links to other important information for CMS families:

CMS Website..... www.cms.school.nz

CMS Facebook page www.facebook.com/Cambridge-Middle-School

CMS International www.cms.school.nz/cms-international

CMS People www.cms.school.nz/cms-people

CMS Parents www.cms.school.nz/cms-parents

Absences/Lateness/Leaving Early www.cms.school.nz/parents--absences-lateness-leaving-early

Buses & Transport..... www.cms.school.nz/parents--buses-and-transport

BYOD & Devices www.cms.school.nz/parents--byod-and-devices

Classroom Placement Process..... www.cms.school.nz/parents--classroom-placement-process

Communication www.cms.school.nz/parents--communication

EOTC – Camps & Trips www.cms.school.nz/parents--eotc-camps-and-trips

Home Learning www.cms.school.nz/parents--home-learning

Lunch Orders www.cms.school.nz/parents--lunch-orders

Newsletters..... www.cms.school.nz/parents--newsletters

Parent Portal (Payments) www.cms.school.nz/parent-portal

PH4L www.cms.school.nz/parents--ph4l

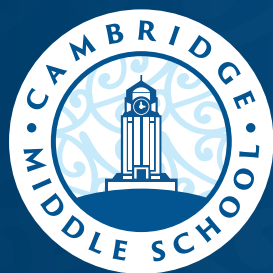
School Guidelines www.cms.school.nz/parents--school-guidelines

Stationery www.cms.school.nz/parents--stationery

Term Dates & Holidays..... www.cms.school.nz/parents--term-dates-and-holidays

Uniform www.cms.school.nz/parents--uniform

Year 6 Transition www.cms.school.nz/parents--year-6-transition



**CAMBRIDGE
MIDDLE
SCHOOL**

CONNECT · INSPIRE · GROW

Clare Street, Cambridge 3434, New Zealand
P. +64 7 827 5135 E. office@cms.school.nz

 [cambridgemiddleschool](https://www.facebook.com/cambridgemiddleschool)

www.cms.school.nz